

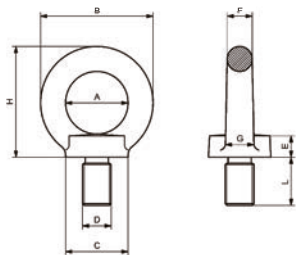
GOLFARE ORIENTABILE CON VITE 8.8 GR. 80

Orientabile sotto carico

CARTEC



Codice	Misura	A	B	C	F	H	Peso
	D x L (mm)	mm	mm	mm	mm	mm	Kg
C80106	M6x15	25	45	25	10	45	0,09
C80108	M8x15	25	45	25	10	45	0,11
C80110	M10x16	25	45	25	10	45	0,13
C80112	M12x22	35	63	35	14	62	0,27
C80114	M14x20	35	63	35	14	62	0,29
C80116	M16x29	35	63	35	14	62	0,31
C80120	M20x32	50	90	50	20	90	0,86
C80124	M24x40	50	90	50	20	90	0,9
C80130	M30x45	60	108	65	24	109	1,7

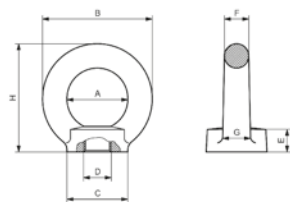


GOLFARE FEMMINA 8.8 GR. 80

CARTEC

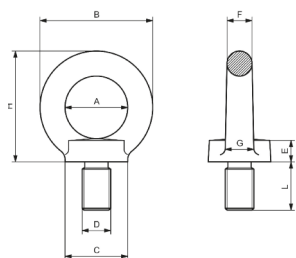


Codice	Misura	A	B	C	E	F	H	Peso
		mm	mm	mm	mm	mm	mm	Kg
C80206	M6	25	45	25	10	10	45	0,1
C80208	M8	25	45	25	10	10	45	0,1
C80210	M10	25	45	25	10	10	45	0,1
C80212	M12	35	63	35	14	14	62	0,26
C80214	M14	35	63	35	14	14	62	0,26
C80216	M16	35	63	35	14	14	62	0,26
C80218	M18	50	90	50	20	20	90	0,75
C80220	M20	50	90	50	20	20	90	0,75
C80224	M24	50	90	50	20	20	90	0,75
C80227	M27	60	108	65	24	24	109	1,4
C80230	M30	60	108	65	24	24	109	1,4



GOLFARE MASCHIO 8.8 GR. 80

CARTEC



Codice	Misura	A	B	C	E	F	H	Peso
	D x L (mm)	mm	mm	mm	mm	mm	mm	Kg
C80306	M6x13	25	45	25	10	10	45	0,09
C80308	M8x13	25	45	25	10	10	45	0,09
C80310	M10x17	25	45	25	10	10	45	0,11
C80312	M12x21	35	63	35	14	14	62	0,27
C80314	M14x21	35	63	35	14	14	62	0,29
C80316	M16x27	35	63	35	14	14	62	0,31
C80318	M18x27	50	90	50	20	20	90	0,84
C80320	M20x30	50	90	50	20	20	90	0,86
C80322	M22x36	50	90	50	20	20	90	0,9
C80324	M24x36	50	90	50	20	20	90	0,9
C80327	M27x45	60	108	65	24	24	109	1,66
C80330	M30x45	60	108	65	24	24	109	1,7
C80336	M36x54	70	126	75	26	28	128	2,15
C80342	M42x63	80	144	85	30	32	147	4,15
C80348	M48x68	90	166	100	35	38	168	6,2
C80356	M56x78	100	184	110	38	42	187	8,8
C80364	M64x90	110	206	120	42	48	208	12,4