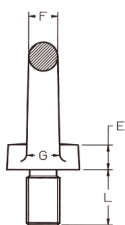
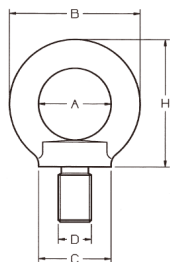


GOLFARE MASCHIO DIN 580 IN ACCIAIO INOX FORGIATO AISI 316

Acciaio AISI 316

CARFER

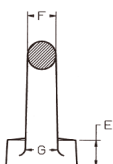
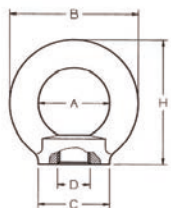


Codice	Misura M (D) mm	A	B	C	E	F	G	H	L	W.L.L.	Peso
		mm	mm	mm	mm	mm	mm	mm	mm	Kg	Kg
A553PB06	SIMILAR TO DIN M 6	20	36	20	6	8	10	36	13	90	0,06
A553PB06Y	M 6	20	36	20	6	8	10	36	13	75	0,06
A553PB08	M 8	20	36	20	6	8	10	36	13	140	0,06
A553PB10	M 10	25	45	25	8	10	12	45	17	230	0,11
A553PB12	M 12	30	54	30	10	12	14	53	20,5	340	0,18
A553PB14	SIMILAR TO DIN M 14	30	54	30	10	12	14	53	20,5	500	0,19
A553PB14Y	M 14	35	63	35	12	14	16	62	27	490	0,27
A553PB16	M 16	35	63	35	12	14	16	62	27	700	0,28
A553PB18	SIMILAR TO DIN M 18	35	63	35	12	14	16	62	27	930	0,33
A553PB18Y	M 18	40	72	40	14	16	19	71	30	850	0,44
A553PB20	M 20	40	72	40	14	16	19	71	30	1200	0,45
A553PB22	SIMILAR TO DIN M 22	40	72	40	14	16	19	71	30	1500	0,5
A553PB24	M 24	50	90	50	18	20	24	90	36	1800	0,74
A553PB30	M 30	60	108	65	22	24	28	109	45	3200	1,86

GOLFARE FEMMINA DIN 582 IN ACCIAIO INOX FORGIATO AISI 316

Acciaio AISI 316

CARFER



Codice	Misura M (D) mm	A	B	C	E	F	G	H	W.L.L.	Peso
		mm	mm	mm	mm	mm	mm	mm	Kg	kg
A554PB06	SIMILAR TO DIN M 6	20	36	20	8,5	8	10	36	90	0,05
A554PB06Y	M 6	20	36	20	8,5	8	10	36	75	0,05
A554PB08	M 8	20	36	20	8,5	8	10	36	140	0,05
A554PB10	M 10	25	45	25	10	10	12	45	230	0,09
A554PB12	M 12	30	54	30	11	12	14	53	340	0,16
A554PB14	SIMILAR TO DIN M 14	30	54	30	11	12	14	53	500	0,15
A554PB14Y	M 14	35	63	35	13	14	16	62	490	0,24
A554PB16	M 16	35	63	35	13	14	16	62	700	0,24
A554PB18	SIMILAR TO DIN M 18	35	63	35	13	14	16	62	930	0,23
A554PB18Y	M 18	40	72	40	16	16	19	71	850	0,37
A554PB20	M 20	40	72	40	16	16	19	71	1200	0,36
A554PB22	SIMILAR TO DIN M 22	40	72	40	16	16	19	71	1500	0,35
A554PB22Y	M 22	50	90	50	20	20	24	90	1400	0,73
A554PB24	M 24	50	90	50	20	20	24	90	1800	0,72
A554PB30	M 30	60	108	65	25	24	28	109	3200	1,32