

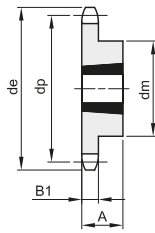
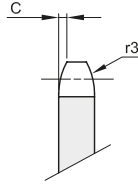


# PIGNONI PER BUSSOLA CONICA - DIN 8187 - ISO 606

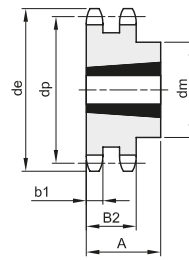
## SPROCKETS FOR TAPER BUSHES - DIN 8187 - ISO 606

**3/8" x 7/32"**  
**9,525 x 5,72 mm**  
**Rullo 6,35 mm**  
**06B - 1 - 2 - 3**

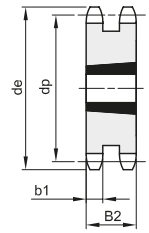
B1	B2	B3	b1	C	r3
5,3	15,4	25,6	5,2	1	10



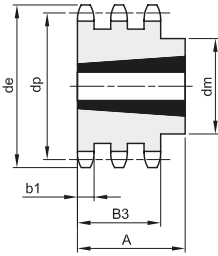
1



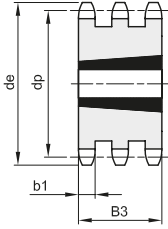
2



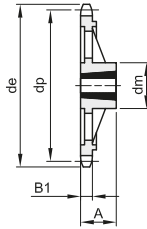
3



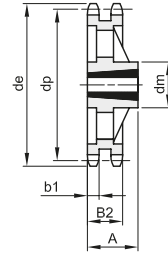
4



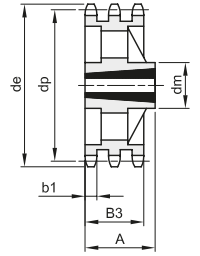
5



6



7



8

Materiale: Acciaio C45 / \*Materiale: Ghisa EN-GJL-200

Z	de	dp	semplici						doppi					tripli						
			codice	dm	A	Bussola	Tipo	Kg.	codice	dm	A	Bussola	Tipo	Kg.	codice	dm	A	Bussola	Tipo	Kg.
17	55,5	51,83	381330017	45	22	1008	1	0,11	382330017	41	22	1008	2	0,11	383330017	25,6	1008	5	0,15	
18	58,6	54,85	381330018	45	22	1008	1	0,14	382330018	43	22	1008	2	0,15						
19	61,6	57,86	381330019	45	22	1008	1	0,15	382330019	46	22	1008	2	0,18	383330019	25,6	1008	5	0,24	
20	64,6	60,89	381330020	46	22	1008	1	0,16	382330020	48	22	1008	2	0,22						
21	67,6	63,90	381330021	46	22	1008	1	0,18	382330021	49	22	1008	2	0,16	383330021	25,6	1008	5	0,34	
22	70,6	66,93	381330022	55	22	1108	1	0,25	382330022	52	22	1108	2	0,28						
23	73,7	69,95	381330023	63	25	1210	1	0,27	382330023	59	25	1210	2	0,27	383330023	25,6	1210	5	0,30	
24	76,7	72,97	381330024	63	25	1210	1	0,30	382330024	61	25	1210	2	0,32						
25	79,7	75,99	381330025	63	25	1210	1	0,32	382330025	64	25	1210	2	0,37	383330025	25,6	1210	5	0,41	
26	82,7	79,02	381330026	63	25	1210	1	0,33	382330026	65	25	1210	2	0,44						
27	85,7	82,04	381330027	63	25	1210	1	0,34	382330027	70	25	1210	2	0,50	383330027	25,6	1210	5	0,55	
28	88,8	85,07	381330028	63	25	1210	1	0,37	382330028	70	25	1210	2	0,57						
30	94,8	91,12	381330030	63	25	1210	1	0,39	382330030	75	25	1210	2	0,68	383330030	79	38	1615	4	0,88
38	119,0	115,34	381330038	70	25	1210	1	0,65	382330038	80	25	1610	2	1,03	383330038	90	38	1615	4	1,75
45	141,1	136,54	381330045	70	25	1210	1	1,01												
57*	177,5	172,91	381330057	83	25	1210	6	1,34	382330057	90	25	1610	7	1,16						
76*	235,1	230,49	381330076	83	25	1210	6	1,84	382330076	90	25	1610	7	2,19						

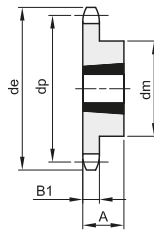
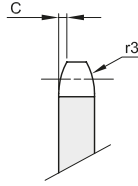


# PIGNONI PER BUSSOLA CONICA - DIN 8187 - ISO 606

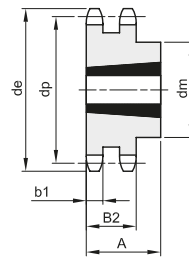
## SPROCKETS FOR TAPER BUSHES - DIN 8187 - ISO 606

**1/2" x 5/16"**  
**12,7 x 7,75 mm**  
**Rullo 8,51 mm**  
**08B - 1 - 2 - 3**

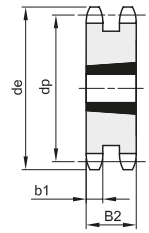
B1	B2	B3	b1	C	r3
7,2	21	34,9	7	1,3	13



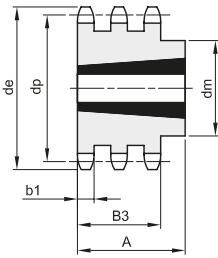
1



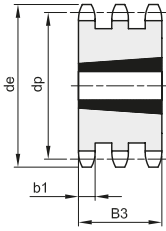
2



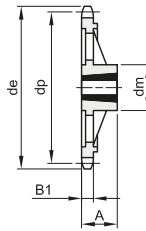
3



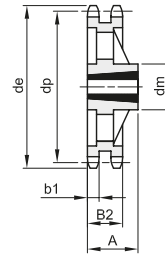
4



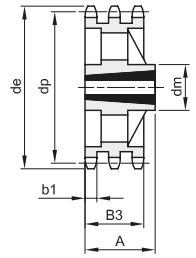
5



6



7



8

Materiale: Acciaio C45 / \*Materiale: Ghisa EN-GJL-200

Z	de	dp	semplici					doppi					tripli							
			codice	dm	A	Bussola	Tipo	Kg.	codice	dm	A	Bussola	Tipo	Kg.	codice	dm	A	Bussola	Tipo	Kg.
15	65,9	61,09	381340015	45	22	1008	1	0,16	382340015	46	22	1008	2	0,22	383340015	34,9	1008	5	0,36	
16	69,9	65,10	381340016	50	22	1108	1	0,20	382340016	50	22	1108	2	0,22						
17	74,0	69,11	381340017	60	25	1210	1	0,22	382340017	56	25	1210	2	0,23	383340017	34,9	1210	5	0,35	
18	78,0	73,14	381340018	60	25	1210	1	0,27	382340018	60	25	1210	2	0,30						
19	82,0	77,16	381340019	63	25	1210	1	0,33	382340019	62	25	1210	2	0,38	383340019	62	38	1215	4	0,61
20	86,0	81,19	381340020	67	25	1610	1	0,27	382340020	66	25	1610	2	0,45						
21	90,1	85,22	381340021	71	25	1610	1	0,36	382340021	70	25	1610	2	0,50	383340021	70	38	1615	4	0,65
22	94,1	89,24	381340022	71	25	1610	1	0,36	382340022	76	25	1610	2	0,55						
23	98,1	93,27	381340023	76	25	1610	1	0,50	382340023	79	25	1610	2	0,62	383340023	70	38	1615	4	0,93
24	102,1	97,29	381340024	76	25	1610	1	0,53	382340024	84	32	2012	2	0,68						
25	106,2	101,33	381340025	76	25	1610	1	0,56	382340025	87	32	2012	2	0,72	383340025	34,9	2012	5	0,85	
26	110,2	105,36	381340026	76	25	1610	1	0,60	382340026	87	32	2012	2	0,82						
27	114,2	109,40	381340027	76	25	1610	1	0,63	382340027	87	32	2012	2	0,92	383340027	34,9	2012	5	1,18	
28	118,3	113,42	381340028	90	32	2012	1	0,77	382340028	87	32	2012	2	1,10						
30	126,3	121,50	381340030	90	32	2012	1	0,91	382340030	87	32	2012	2	1,24	383340030	34,9	2012	5	1,73	
38	158,6	153,80	381340038	90	32	2012	1	1,25	382340038	100	32	2012	2	2,50	383340038	34,9	2012	5	3,53	
45	188,6	182,07	381340045	111	32	2012	1	1,68												
57*	237,1	230,54	381340057	111	32	2012	6	2,78	382340057	111	32	2012	7	3,64						
76*	313,9	307,33	381340076	111	32	2012	6	3,81	382340076	111	32	2012	7	5,09						

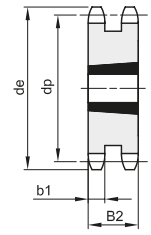
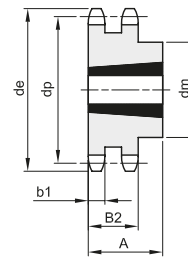
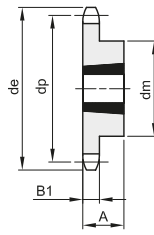
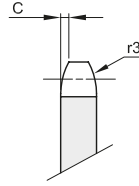


# PIGNONI PER BUSSOLA CONICA - DIN 8187 - ISO 606

## SPROCKETS FOR TAPER BUSHES - DIN 8187 - ISO 606

**5/8" x 3/8"**  
**15,875 x 9,65 mm**  
 Rullo 10,16 mm  
**10B - 1 - 2 - 3**

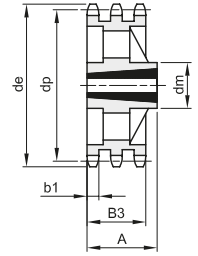
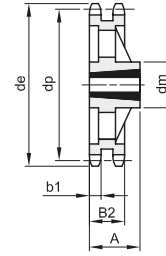
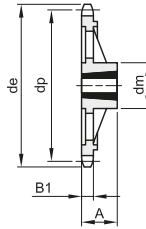
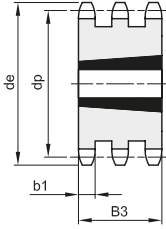
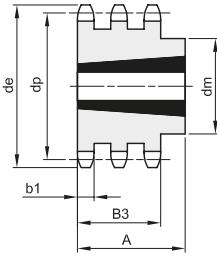
B1	B2	B3	b1	C	r3
9,1	25,5	42,1	9	1,6	16



1

2

3



4

5

6

7

8

Materiale: Acciaio C45 / \*Materiale: Ghisa EN-GJL-200

Z	de	dp	semplici					doppi					tripli							
			codice	dm	A	Bussola	Tipo	Kg.	codice	dm	A	Bussola	Tipo	Kg.	codice	dm	A	Bussola	Tipo	Kg.
13	73,2	66,33	381350013	47	22	1008	1	0,23												
14	78,2	71,34	381350014	52	22	1108	1	0,27												
15	83,2	76,35	381350015	60	25	1210	1	0,30	382350015	25,5	1210	3	0,38	383350015	42,1	1215	5	0,63		
16	88,3	81,37	381350016	63	25	1210	1	0,38	382350016	25,5	1610	3	0,42							
17	93,3	86,39	381350017	71	25	1610	1	0,38	382350017	25,5	1610	3	0,47	383350017	42,1	1215	5	1,01		
18	98,3	91,42	381350018	71	25	1610	1	0,43	382350018	25,5	1610	3	0,60							
19	103,3	96,44	381350019	75	25	1610	1	0,54	382350019	25,5	1610	3	0,72	383350019	42,1	1615	5	1,19		
20	108,4	101,49	381350020	76	25	1610	1	0,61	382350020	25,5	1610	3	0,87							
21	113,4	106,51	381350021	76	25	1610	1	0,65	382350021	25,5	1610	3	1,01	383350021	42,1	1615	5	1,66		
22	118,4	111,55	381350022	76	25	1610	1	0,72	382350022	25,5	1610	3	1,18							
23	123,5	116,58	381350023	76	25	1610	1	0,77	382350023	25,5	1610	3	1,35	383350023	42,1	2012	5	1,78		
24	128,5	121,62	381350024	90	32	2012	1	0,98	382350024	90	32	2012	2	1,45						
25	133,6	126,66	381350025	90	32	2012	1	1,05	382350025	90	32	2012	2	1,55	383350025	105	44	2517	4	1,81
26	138,6	131,70	381350026	90	32	2012	1	1,11	382350026	90	32	2012	2	1,75						
27	143,6	136,74	381350027	90	32	2012	1	1,17	382350027	90	32	2012	2	1,98	383350027	110	44	2517	4	2,45
28	148,7	141,78	381350028	90	32	2012	1	1,29	382350028	90	32	2012	2	2,30						
30	158,8	151,87	381350030	90	32	2012	1	1,40	382350030	90	32	2012	2	2,63	383350030	120	44	2517	4	3,54
38	199,1	192,23	381350038	100	32	2012	1	2,43												
45	236,0	227,58	381350045	111	32	2012	1	3,55												
57*	296,6	288,18	381350057	111	32	2012	6	4,28												
76*	392,5	384,16	381350076	111	32	2012	6	5,95												

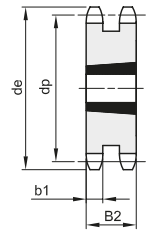
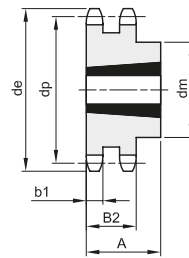
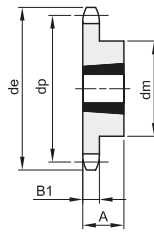
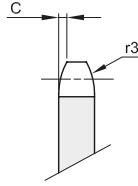


# PIGNONI PER BUSSOLA CONICA - DIN 8187 - ISO 606

## SPROCKETS FOR TAPER BUSHES - DIN 8187 - ISO 606

**3/4" x 7/16"**  
**19,05 x 11,68 mm**  
 Rullo 12,07 mm  
**12B - 1 - 2 - 3**

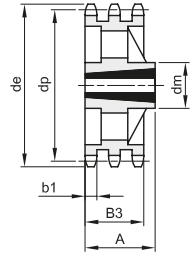
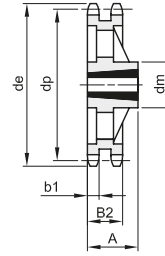
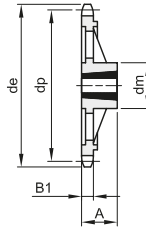
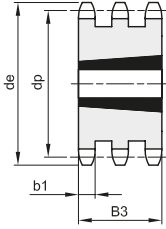
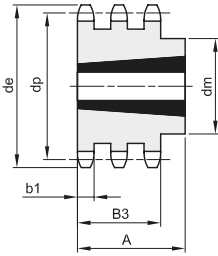
B1	B2	B3	b1	C	r3
11,1	30,3	49,8	10,8	2	19



1

2

3



4

5

6

7

8

Materiale: Acciaio C45 / \*Materiale: Ghisa EN-GJL-200

Z	de	dp	semplici					doppi					tripli								
			codice	dm	A	Bussola	Tipo	Kg.	codice	dm	A	Bussola	Tipo	Kg.	codice	dm	A	Bussola	Tipo	Kg.	
13	87,8	79,60	381360013	60	25	1210	1	0,35													
14	93,8	85,61	381360014	67	25	1610	1	0,40													
15	99,8	91,62	381360015	70	25	1610	1	0,44	382360015	30,3	1610	3	0,68	383360015	49,8	1615	5	1,11			
16	105,8	97,65	381360016	71	25	1610	1	0,53	382360016	30,3	1610	3	0,89								
17	111,9	103,67	381360017	76	25	1610	1	0,66	382360017	30,3	1610	3	1,14	383360017	49,8	1615	5	1,75			
18	117,9	109,71	381360018	90	32	2012	1	0,86	382360018	90	32	2012	2	1,18							
19	123,9	115,73	381360019	90	32	2012	1	0,94	382360019	90	32	2012	2	1,24	383360019	49,8	2012	5	1,99		
20	130,0	121,78	381360020	90	32	2012	1	1,04	382360020	108	44	2517	2	1,40							
21	136,0	127,81	381360021	102	44	2517	1	1,24	382360021	108	44	2517	2	1,68	383360021	49,8	2517	5	2,09		
22	142,0	133,86	381360022	108	44	2517	1	1,60	382360022	108	44	2517	2	1,99							
23	148,1	139,90	381360023	108	44	2517	1	1,70	382360023	108	44	2517	2	2,24	383360023	49,8	2517	5	3,00		
24	154,1	145,94	381360024	108	44	2517	1	1,81	382360024	108	44	2517	2	2,54							
25	160,2	151,99	381360025	108	44	2517	1	1,93	382360025	108	44	2517	2	2,87	383360025	49,8	2517	5	3,98		
26	166,2	158,04	381360026	108	44	2517	1	2,04	382360026	108	44	2517	2	3,17							
27	172,3	164,09	381360027	108	44	2517	1	2,14	382360027	108	44	2517	2	3,55	383360027	140	51	3020	4	3,90	
28	178,3	170,13	381360028	108	44	2517	1	2,37	382360028	108	44	2517	2	4,10							
30	190,4	182,24	381360030	108	44	2517	1	2,60	382360030	108	44	2517	2	4,62	383360030	140	51	3020	4	5,64	
38	238,9	230,69	381360038	108	44	2517	1	3,93	382360038	140	51	3020	2	8,11	383360038	140	51	3020	4	11,58	
45	283,2	273,10	381360045	124	44	2517	1	5,52													
57*	355,9	345,81	381360057	124	44	2517	6	6,48	382360057	160	51	3020	7	10,28	383360057	160	51	3020	8	13,23	
76*	471,1	460,99	381360076	124	44	2517	6	9,71	382360076	160	51	3020	7	15,24							

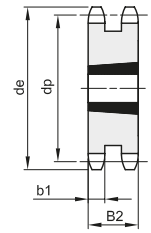
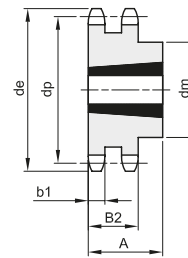
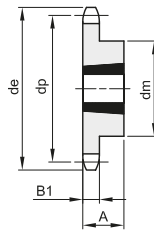
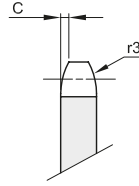


# PIGNONI PER BUSSOLA CONICA - DIN 8187 - ISO 606

## SPROCKETS FOR TAPER BUSHES - DIN 8187 - ISO 606

**1" x 17,02 mm**  
**25,4 x 17,02 mm**  
**Rullo 15,88 mm**  
**16B - 1 - 2 - 3**

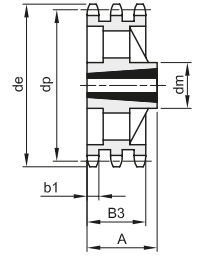
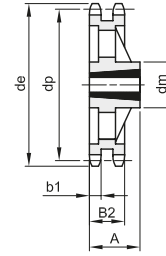
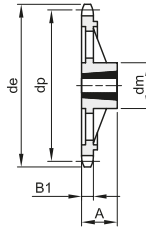
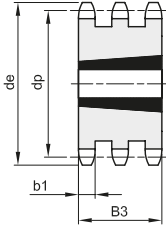
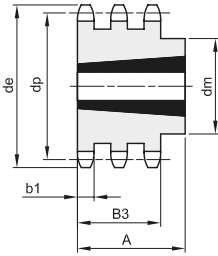
B1	B2	B3	b1	C	r3
16,2	47,7	79,6	15,8	2,5	26



1

2

3



4

5

6

7

8

Materiale: Acciaio C45 / \*Materiale: Ghisa EN-GJL-200

Z	de	dp	semplici					doppi					tripli							
			codice	dm	A	Bussola	Tipo	Kg.	codice	dm	A	Bussola	Tipo	Kg.	codice	dm	A	Bussola	Tipo	Kg.
13	117,7	106,13	381380013	73	38	1615	1	0,98												
14	125,7	114,15	381380014	75	38	1615	1	1,14												
15	133,7	122,16	381380015	76	38	1615	1	1,30	382380015	47,7	2012	3	2,11							
16	141,8	130,20	381380016	90	32	2012	1	1,40	382380016	47,7	2517	3	2,25							
17	149,8	138,23	381380017	90	32	2012	1	1,59	382380017	47,7	2517	3	2,53	383380017	79,6	2517	5	4,29		
18	157,8	146,28	381380018	108	44	2517	1	2,10	382380018	47,7	2517	3	3,10							
19	165,9	154,31	381380019	108	44	2517	1	2,29	382380019	47,7	2517	3	3,80	383380019	79,6	3030	5	4,36		
20	173,9	162,38	381380020	110	44	2517	1	2,60	382380020	47,7	2517	3	4,10							
21	182,0	170,42	381380021	110	44	2517	1	2,81	382380021	140	51	3020	2	4,15	383380021	79,6	3030	5	6,69	
22	190,1	178,48	381380022	110	44	2517	1	3,10	382380022	140	51	3020	2	4,90						
23	198,1	186,53	381380023	110	44	2517	1	3,38	382380023	140	51	3020	2	5,69	383380023	159	89	3535	4	7,80
24	206,2	194,59	381380024	110	44	2517	1	3,70	382380024	140	51	3020	2	6,00						
25	214,2	202,66	381380025	110	44	2517	1	3,97	382380025	140	51	3020	2	6,38	383380025	175	89	3535	4	10,93
26	222,3	210,72	381380026	110	44	2517	1	4,26	382380026	140	51	3020	2	7,80						
27	230,4	218,79	381380027	110	44	2517	1	4,55	382380027	140	51	3020	2	9,27	383380027	175	89	3535	4	14,06
28	238,4	226,85	381380028	110	44	2517	1	5,26	382380028	140	51	3020	2	11,40						
30	254,6	242,99	381380030	120	44	2517	1	5,97	382380030	140	76	3030	2	13,50	383380030	175	89	3535	4	19,10
38	319,2	307,59	381380038	160	51	3020	1	8,73	382380038	*160	76	3030	7	14,94	383380038	*175	89	3535	8	21,65
45	377,9	364,12	381380045	160	51	3020	1	12,49	382380045	*160	76	3030	7	19,80	383380045	*175	89	3535	8	28,10
57*	474,9	461,07	381380057	160	51	3020	6	13,87	382380057	175	89	3535	7	22,00	383380057	216	102	4040	8	40,50
76*	628,4	614,65	381380076	160	51	3020	6	22,63	382380076	175	89	3535	7	37,00	383380076	216	102	4040	8	53,30

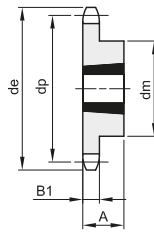
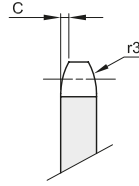


# PIGNONI PER BUSSOLA CONICA - DIN 8187 - ISO 606

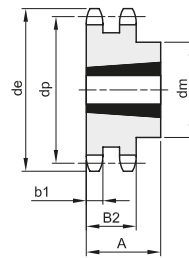
## SPROCKETS FOR TAPER BUSHES - DIN 8187 - ISO 606

**1"1/4 x 3/4"**  
**31,75 x 19,56 mm**  
 Rullo 19,05 mm  
**20B - 1 - 2 - 3**

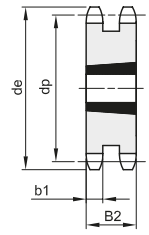
B1	B2	B3	b1	C	r3
18,5	54,6	91	18,2	3,5	32



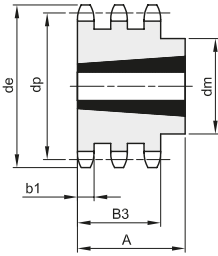
1



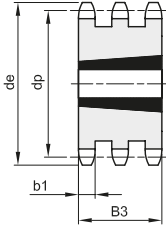
2



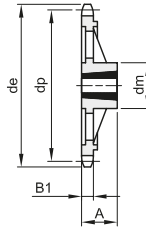
3



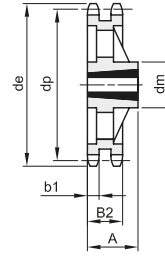
4



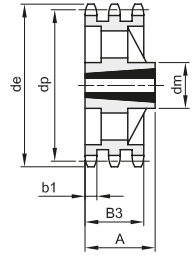
5



6



7



8

Materiale: Acciaio C45 / \*Materiale: Ghisa EN-GJL-200

Z	de	dp	semplici					doppi					tripli									
			codice	dm	A	Bussola	Tipo	Kg.	codice	dm	A	Bussola	Tipo	Kg.	codice	dm	A	Bussola	Tipo	Kg.		
12	137,0	122,68	381400012	90	32	1615	1	1,90														
13	147,5	132,65	381400013	90	32	2012	1	1,50	382400013	54,6	2517	3	2,20									
14	157,6	142,68	381400014	110	44	2517	1	2,40														
15	167,7	152,72	381400015	110	44	2517	1	3,39	382400015	54,6	2517	3	4,00	383400015	91	3020	5	4,43				
16	177,7	162,75	381400016	110	44	2517	1	4,23														
17	187,7	172,78	381400017	110	44	2517	1	5,07	382400017	54,6	2517	3	5,00	383400017	91	3030	5	7,39				
18	197,8	182,85	381400018	110	44	2517	1	5,91														
19	207,9	192,91	381400019	110	44	2517	1	6,75	382400019	140	76	3030	2	6,30	383400019	91	3030	5	11,65			
20	217,9	202,98	381400020	110	44	2517	1	7,23														
21	228,0	213,04	381400021	120	44	2517	1	7,70	382400021	140	76	3030	2	8,80	383400021	91	3535	5	12,80			
23	248,2	233,17	381400023	120	44	2517	1	8,78	382400023	140	76	3030	2	9,80	383400023	91	3535	5	17,38			
25	268,4	253,33	381400025	120	44	2517	1	9,50	382400025	140	76	3030	2	10,50	383400025	91	3535	5	22,40			
30	318,7	303,75	381400030	160	51	3020	1	11,60	382400030	160	76	3030	2	14,00	383400030	91	3535	5	36,50			
38*	399,4	384,49	381400038	160	51	3020	6	15,80	382400038	160	76	3030	7	22,00	383400038	178	91	3535	8	28,00		
57*	592,3	576,36	381400057	160	51	3020	6	17,90	382400057	175	89	3535	7	37,00	383400057	216	102	4040	8	42,00		
76*	784,3	768,32	381400076	160	51	3020	6	25,00	382400076	175	89	3535	7	62,00	383400076	260	114	4545	8	85,00		

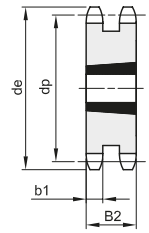
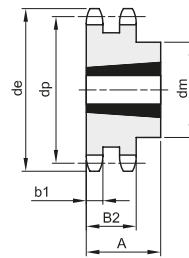
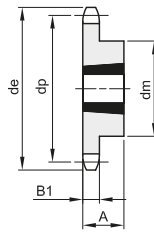
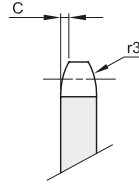


# PIGNONI PER BUSSOLA CONICA - DIN 8187 - ISO 606

## SPROCKETS FOR TAPER BUSHES - DIN 8187 - ISO 606

**1"1/2 x 1"**  
**38,1 x 25,4 mm**  
 Rullo 25,4 mm  
**24B - 1 - 2 - 3**

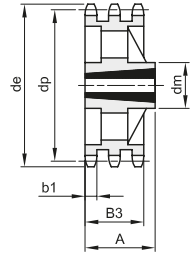
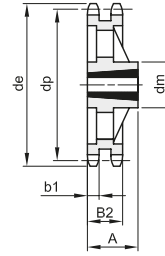
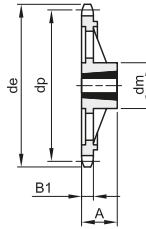
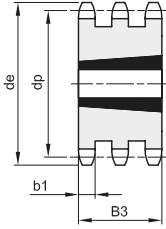
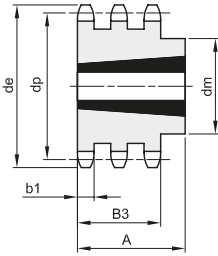
B1	B2	B3	b1	C	r3
24,1	72	120,3	23,6	4	38



1

2

3



4

5

6

7

8

Materiale: Acciaio C45 / \*Materiale: Ghisa EN-GJL-200

Z	de	dp	semplici					doppi					tripli							
			codice	dm	A	Bussola	Tipo	Kg.	codice	dm	A	Bussola	Tipo	Kg.	codice	dm	A	Bussola	Tipo	Kg.
11	149,0	135,21	381420011	90	32	2012	1	1,70												
12	161,0	147,22	381420012	90	32	2012	1	2,16												
13	173,0	159,18	381420013	110	44	2517	1	2,77	382420013	72	2517	3	5,30							
14	185,0	171,22	381420014	120	44	2517	1	3,60												
15	197,0	183,26	381420015	120	44	2517	1	4,20	382420015	72	3020	3	6,60	383420015	120,3	3030	5	20,00		
17	221,0	207,34	381420017	140	51	3020	1	5,40	382420017	72	3020	3	10,30	383420017	120,3	3030	5	25,00		
18	233,0	219,42	381420018	140	51	3020	1	6,10												
19	245,5	231,49	381420019	140	51	3020	1	6,85	382420019	160	76	3030	2	14,80	383420019	120,3	3535	5	30,00	
20	257,5	243,57	381420020	140	51	3020	1	7,76												
21	270,5	255,65	381420021	140	51	3020	1	8,52	382420021	160	76	3030	2	19,50	383420021	120,3	4040	5	35,00	
23	294,5	279,80	381420023	160	51	3020	1	11,31	382420023	175	89	3535	2	24,00	383420023	120,3	4040	5	44,00	
25	319,0	304,00	381420025	160	51	3020	1	13,33	382420025	175	89	3535	2	29,00	383420025	120,3	4040	5	50,00	
30	379,5	364,50	381420030	160	51	3020	1	19,00	382420030	175	89	3535	2	40,00	383420030	120,3	4040	5	60,00	
38*	476,5	461,39	381420038	160	76	3030	6	24,00	382420038	175	89	3535	7	44,00	383420038	120,3	4040	8	66,00	
57*	707,5	691,63	381420057	160	76	3030	6	45,00	382420057	175	89	3535	7	72,00	383420057	120,3	4545	8	120,00	
76*	939,0	921,98	381420076	175	89	3535	6	70,00	382420076	216	102	4040	7	107,00	383420076	120,3	4545	8	131,00	