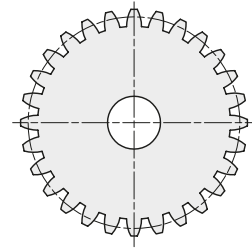
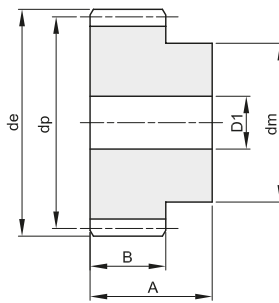




## RUOTE DENTATE CILINDRICHE TEMPERATE AD INDUZIONE CYLINDRICAL GEARS WITH HARDENED TEETH

**MODULO 2**

ANGOLO DI PRESSIONE 20°



A	B
35	20

Materiale: Acciaio C45

Z	codice	de	dp	dm	D1	Kg.
12	402020012	28	24	18	10	0,08
15	402020015	34	30	24	10	0,14
18	402020018	40	36	25	10	0,19
20	402020020	44	40	30	10	0,26
24	402020024	52	48	35	12	0,36
25	402020025	54	50	35	12	0,39
30	402020030	64	60	40	14	0,55
36	402020036	76	72	45	14	0,78
40	402020040	84	80	50	14	0,97
50	402020050	104	100	70	16	1,62
60	402020060	124	120	70	16	2,16

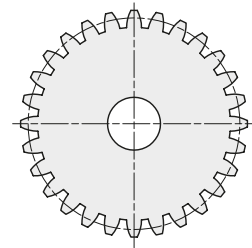
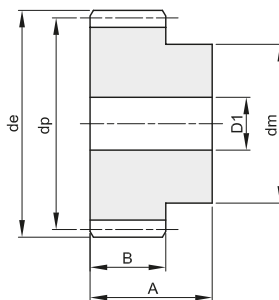
Z	codice	de	dp	dm	D1	Kg.



## RUOTE DENTATE CILINDRICHE TEMPERATE AD INDUZIONE CYLINDRICAL GEARS WITH HARDENED TEETH

**MODULO 2,5**

ANGOLO DI PRESSIONE 20°



A	B
45	25

Materiale: Acciaio C45

Z	codice	de	dp	dm	D1	Kg.
12	402025012	35	30	22	10	0,17
15	402025015	42,5	37,5	30	10	0,30
18	402025018	50	45	35	12	0,42
20	402025020	55	50	40	12	0,54
24	402025024	65	60	45	14	0,74
25	402025025	67,5	62,5	50	14	0,85
30	402025030	80	75	55	14	1,18
36	402025036	95	90	60	16	1,61
40	402025040	105	100	70	16	2,06
50	402025050	130	125	80	20	3,07
60	402025060	155	150	100	20	4,57

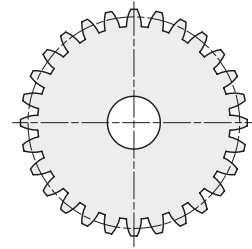
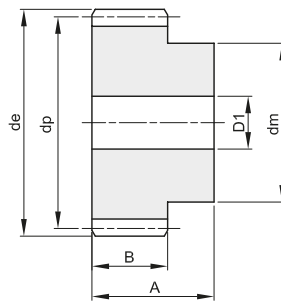
Z	codice	de	dp	dm	D1	Kg.



## RUOTE DENTATE CILINDRICHE TEMPERATE AD INDUZIONE CYLINDRICAL GEARS WITH HARDENED TEETH

### MODULO 3

ANGOLO DI PRESSIONE 20°



A	B
50	30

Materiale: Acciaio C45

Z	codice	de	dp	dm	D1	Kg.
12	402030012	42	36	27	12	0,28
15	402030015	51	45	35	12	0,47
18	402030018	60	54	45	14	0,72
20	402030020	66	60	45	14	0,84
24	402030024	78	72	50	16	1,18
25	402030025	81	75	60	16	1,39
30	402030030	96	90	60	16	1,85
36	402030036	114	108	70	20	2,62
40	402030040	126	120	80	20	3,31

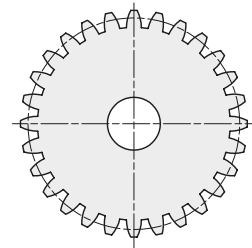
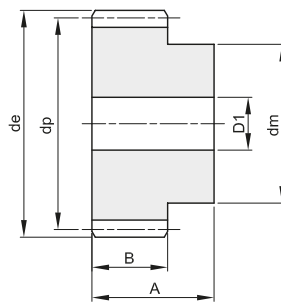
Z	codice	de	dp	dm	D1	Kg.



## RUOTE DENTATE CILINDRICHE TEMPERATE AD INDUZIONE CYLINDRICAL GEARS WITH HARDENED TEETH

### MODULO 4

ANGOLO DI PRESSIONE 20°



A	B
60	40

Materiale: Acciaio C45

Z	codice	de	dp	dm	D1	Kg.
12	402040012	56	48	35	14	0,63
15	402040015	68	60	45	14	1,05
18	402040018	80	72	50	16	1,47
20	402040020	88	80	60	16	1,90
24	402040024	104	96	75	20	2,79
25	402040025	108	100	75	20	2,98
30	402040030	128	120	75	20	4,06
36	402040036	152	144	80	25	5,63

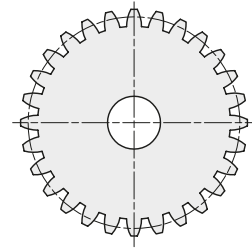
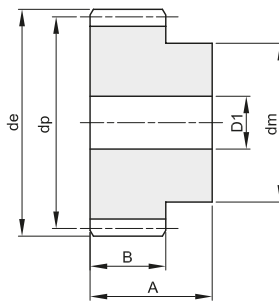
Z	codice	de	dp	dm	D1	Kg.



## RUOTE DENTATE CILINDRICHE TEMPERATE AD INDUZIONE CYLINDRICAL GEARS WITH HARDENED TEETH

**MODULO 5**

ANGOLO DI PRESSIONE **20°**



A	B
75	50

Materiale: Acciaio C45

Z	codice	de	dp	dm	D1	Kg.
12	402050012	70	60	45	20	1,21
15	402050015	85	75	60	20	2,07
18	402050018	100	90	70	20	3,02
20	402050020	110	100	80	20	3,83
24	402050024	130	120	90	20	5,44
25	402050025	135	125	90	20	5,82
30	402050030	160	150	110	25	8,44

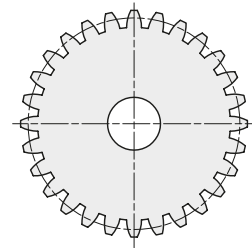
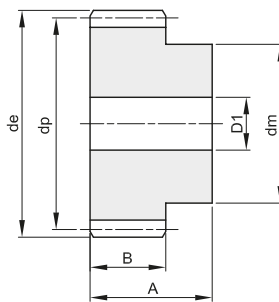
Z	codice	de	dp	dm	D1	Kg.



## RUOTE DENTATE CILINDRICHE TEMPERATE AD INDUZIONE CYLINDRICAL GEARS WITH HARDENED TEETH

**MODULO 6**

ANGOLO DI PRESSIONE **20°**



A	B
80	60

Materiale: Acciaio C45

Z	codice	de	dp	dm	D1	Kg.
12	402060012	84	72	54	20	1,98
15	402060015	102	90	70	20	3,29
16	402060016	108	95	75	20	3,80
18	402060018	120	108	80	20	4,76
20	402060020	132	120	90	20	5,99
24	402060024	156	144	110	25	8,70
25	402060025	162	150	110	25	9,33

Z	codice	de	dp	dm	D1	Kg.